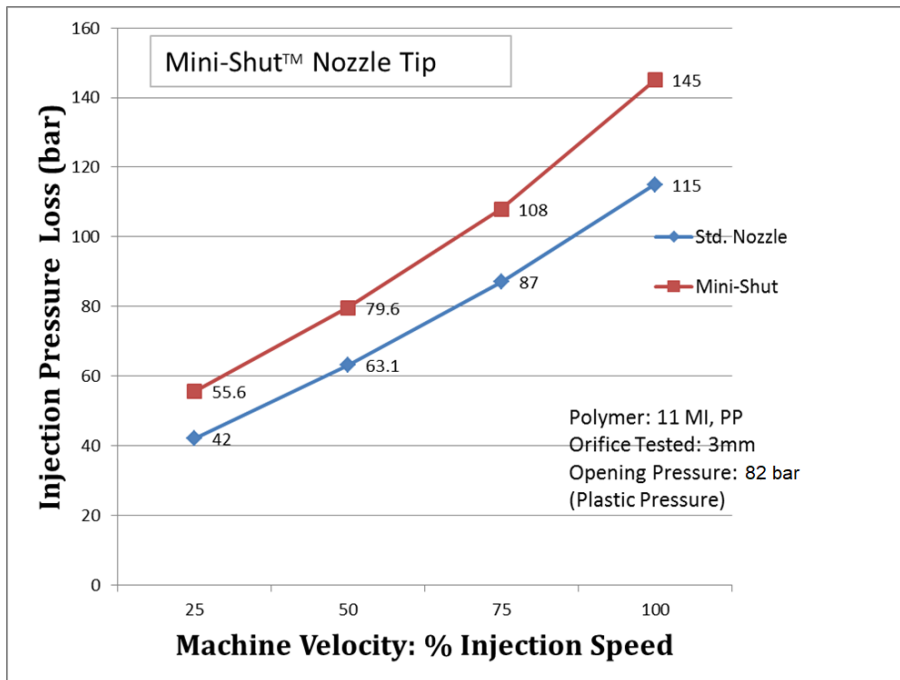


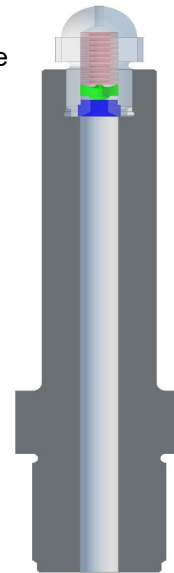
# "PRECISION INJECTION MOLDING: MINI-SHUT™ NOZZLE TIP

## THEORY VS. REALITY

Control of the Melting process depends on a number of factors including the proper screw and NRV design, settings of machine variables such as back pressure, barrel temperatures, screw speed and melt decompression. If we could eliminate the need for *Melt Decompression* which is used to eliminate drooling and stringing, the process becomes more stable and many surface imperfections become obsolete!



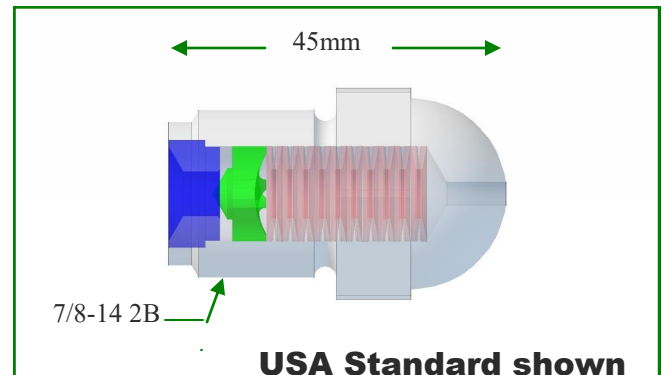
Mini-Shut™  
Shown with  
2-PC Nozzle  
Body



Patent # 8.734,146 B2

## **MINI-SHUT™ FEATURES**

1. Eliminate the Need for Excessive Melt-Decompression
2. Eliminate Drooling
3. Eliminate Stringing
4. Easy to Install and Remove
5. Inexpensive
6. Fits on Virtually All Nozzle Bodies
7. Designs for All Machine Sizes-Applications
8. Operate the Clamp and Screw Simultaneously
9. On the Shelf Stock Item
10. Low Pressure Drop



**USA Standard shown**  
**Other**  
**Sizes Available**